

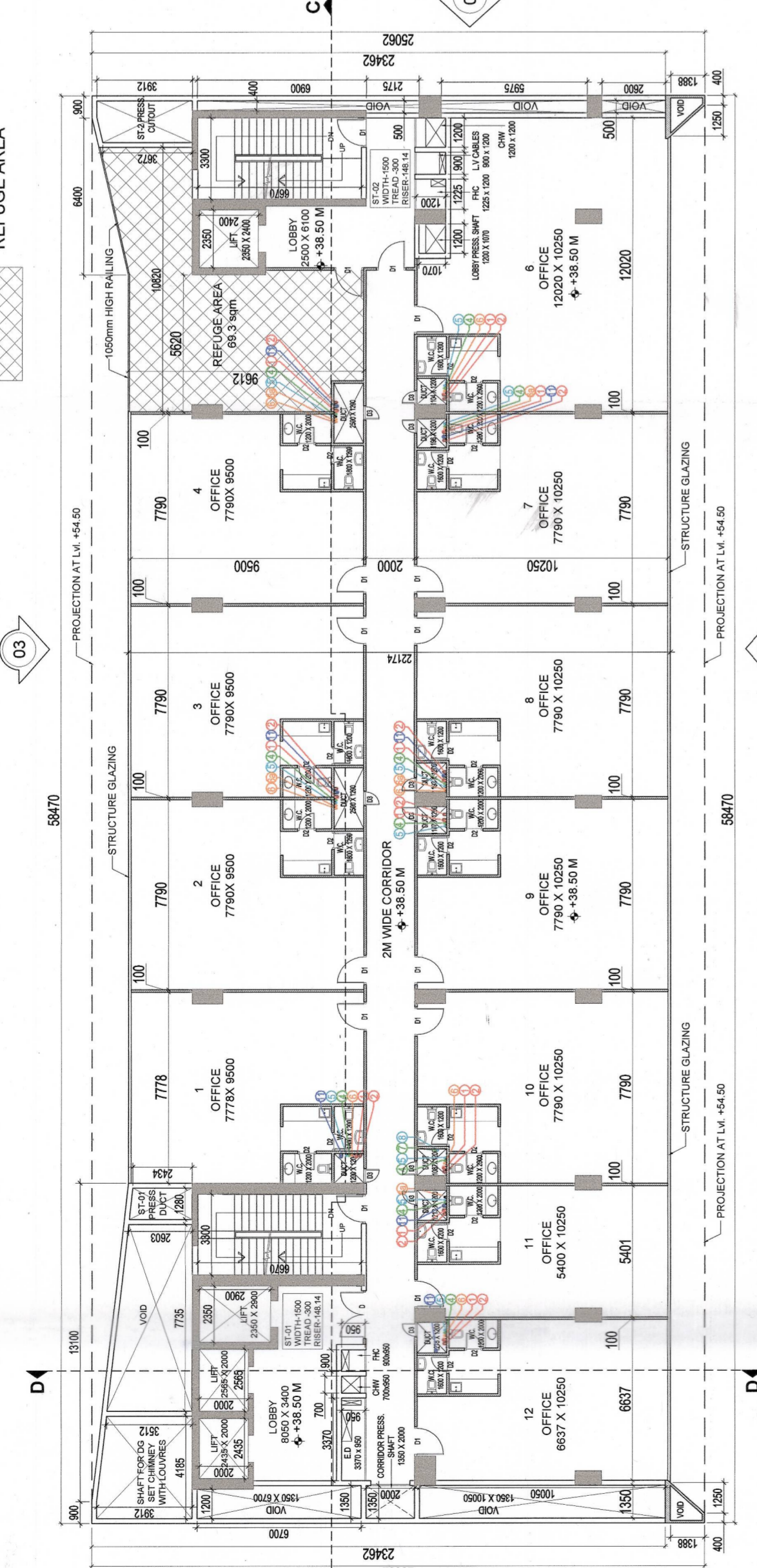
AREA OF THE CONNECTIVE FLOOR: 114.06 + 114.06 + 228.12 = 456.24 SQM  
 AREA REQUIRED FOR THE OCCUPANT: 45.34 SQM  
 TOTAL AREA OF REFUGE TERRACE REQUIRED: 456.24 + 45.34 = 501.58 SQM  
 AS REQUIRED AREA OF REFUGE TERRACE IS 456.24 SQM > 501.58 SQM  
 PROPOSED AREA OF REFUGE TERRACE IS 487.89 SQM

ITEM NO.	DESCRIPTION	AREA (SQM)
1	1000 HORIZONTAL GLASS & ALUMINUM FRAME	1000
2	1000 HORIZONTAL GLASS & ALUMINUM FRAME	1000
3	1000 HORIZONTAL GLASS & ALUMINUM FRAME	1000
4	1000 HORIZONTAL GLASS & ALUMINUM FRAME	1000
5	1000 HORIZONTAL GLASS & ALUMINUM FRAME	1000
6	1000 HORIZONTAL GLASS & ALUMINUM FRAME	1000
7	1000 HORIZONTAL GLASS & ALUMINUM FRAME	1000
8	1000 HORIZONTAL GLASS & ALUMINUM FRAME	1000
9	1000 HORIZONTAL GLASS & ALUMINUM FRAME	1000
10	1000 HORIZONTAL GLASS & ALUMINUM FRAME	1000
11	1000 HORIZONTAL GLASS & ALUMINUM FRAME	1000
12	1000 HORIZONTAL GLASS & ALUMINUM FRAME	1000
13	1000 HORIZONTAL GLASS & ALUMINUM FRAME	1000
14	1000 HORIZONTAL GLASS & ALUMINUM FRAME	1000
15	1000 HORIZONTAL GLASS & ALUMINUM FRAME	1000
16	1000 HORIZONTAL GLASS & ALUMINUM FRAME	1000
17	1000 HORIZONTAL GLASS & ALUMINUM FRAME	1000
18	1000 HORIZONTAL GLASS & ALUMINUM FRAME	1000
19	1000 HORIZONTAL GLASS & ALUMINUM FRAME	1000
20	1000 HORIZONTAL GLASS & ALUMINUM FRAME	1000
21	1000 HORIZONTAL GLASS & ALUMINUM FRAME	1000
22	1000 HORIZONTAL GLASS & ALUMINUM FRAME	1000
23	1000 HORIZONTAL GLASS & ALUMINUM FRAME	1000
24	1000 HORIZONTAL GLASS & ALUMINUM FRAME	1000
25	1000 HORIZONTAL GLASS & ALUMINUM FRAME	1000
26	1000 HORIZONTAL GLASS & ALUMINUM FRAME	1000
27	1000 HORIZONTAL GLASS & ALUMINUM FRAME	1000
28	1000 HORIZONTAL GLASS & ALUMINUM FRAME	1000
29	1000 HORIZONTAL GLASS & ALUMINUM FRAME	1000
30	1000 HORIZONTAL GLASS & ALUMINUM FRAME	1000
31	1000 HORIZONTAL GLASS & ALUMINUM FRAME	1000
32	1000 HORIZONTAL GLASS & ALUMINUM FRAME	1000
33	1000 HORIZONTAL GLASS & ALUMINUM FRAME	1000
34	1000 HORIZONTAL GLASS & ALUMINUM FRAME	1000
35	1000 HORIZONTAL GLASS & ALUMINUM FRAME	1000
36	1000 HORIZONTAL GLASS & ALUMINUM FRAME	1000
37	1000 HORIZONTAL GLASS & ALUMINUM FRAME	1000
38	1000 HORIZONTAL GLASS & ALUMINUM FRAME	1000
39	1000 HORIZONTAL GLASS & ALUMINUM FRAME	1000
40	1000 HORIZONTAL GLASS & ALUMINUM FRAME	1000
41	1000 HORIZONTAL GLASS & ALUMINUM FRAME	1000
42	1000 HORIZONTAL GLASS & ALUMINUM FRAME	1000
43	1000 HORIZONTAL GLASS & ALUMINUM FRAME	1000
44	1000 HORIZONTAL GLASS & ALUMINUM FRAME	1000
45	1000 HORIZONTAL GLASS & ALUMINUM FRAME	1000
46	1000 HORIZONTAL GLASS & ALUMINUM FRAME	1000
47	1000 HORIZONTAL GLASS & ALUMINUM FRAME	1000
48	1000 HORIZONTAL GLASS & ALUMINUM FRAME	1000
49	1000 HORIZONTAL GLASS & ALUMINUM FRAME	1000
50	1000 HORIZONTAL GLASS & ALUMINUM FRAME	1000

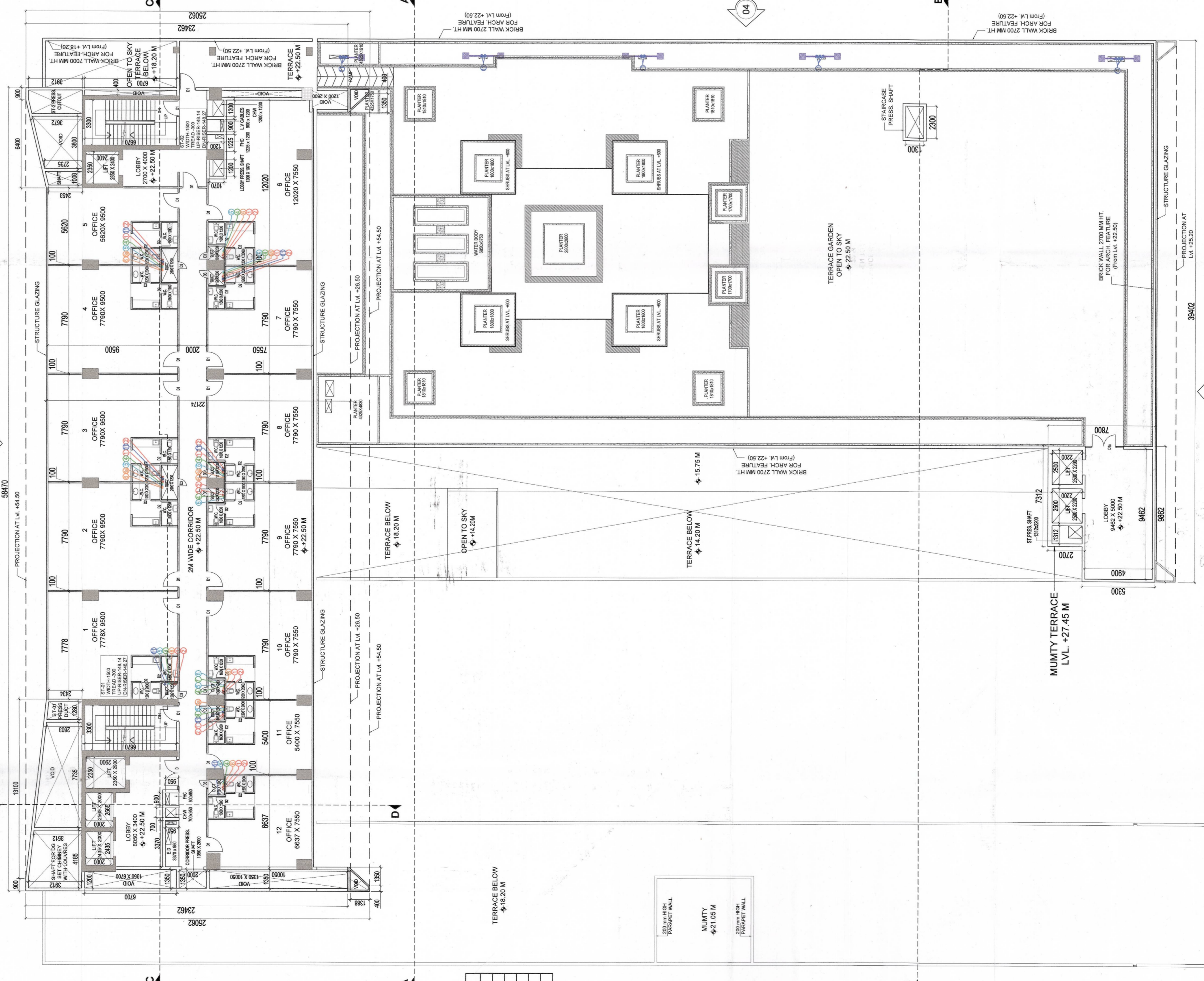
S. NO.	NAME	AREA (SQM)	LEVEL LVL.
1	D	2000 X 2000	2400
2	D1	1500 X 2000	2400
3	D2	1500 X 2000	2400
4	D3	600 X 2400	2400

S. NO.	NAME	AREA (SQM)	LEVEL LVL.
1	D	2000 X 2000	2400
2	D1	1500 X 2000	2400
3	D2	1500 X 2000	2400
4	D3	600 X 2400	2400

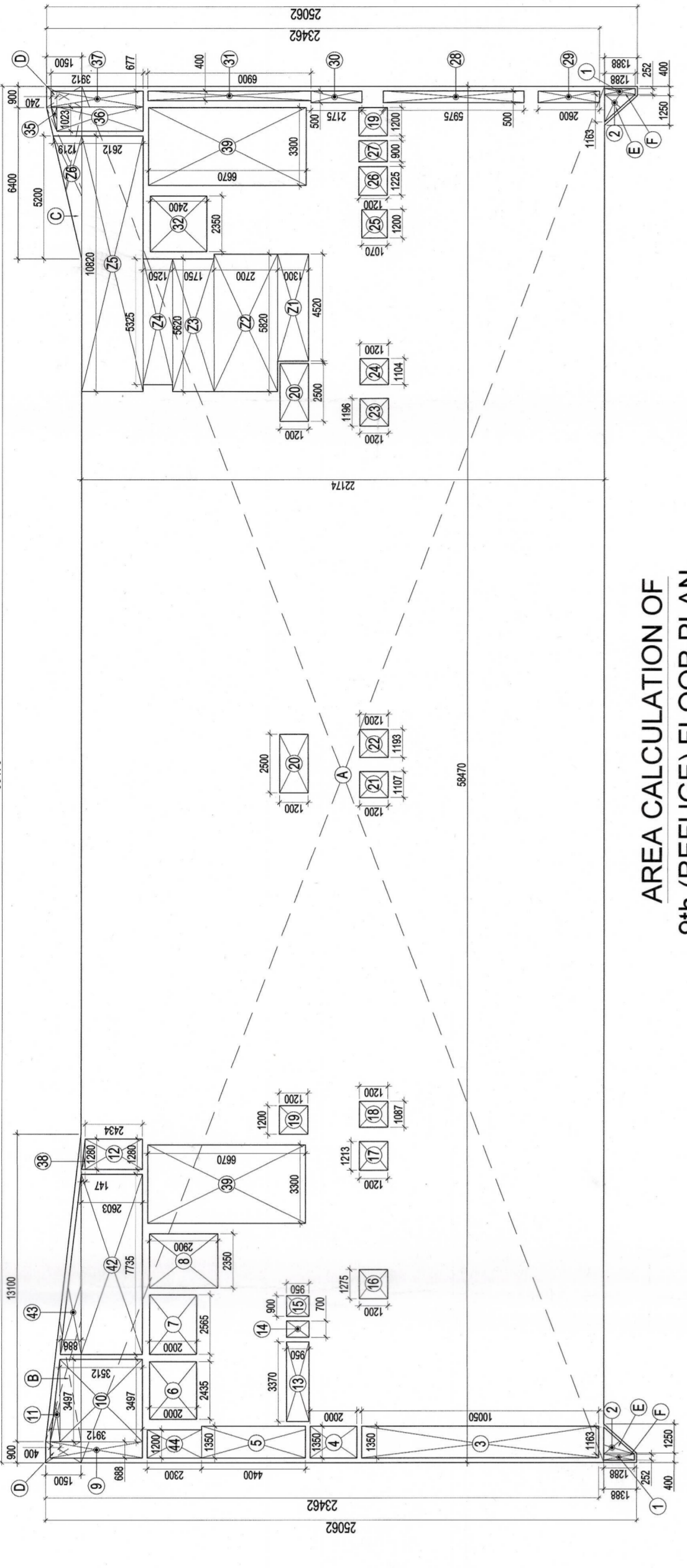
S. NO.	NAME	AREA (SQM)	LEVEL LVL.
1	D	2000 X 2000	2400
2	D1	1500 X 2000	2400
3	D2	1500 X 2000	2400
4	D3	600 X 2400	2400



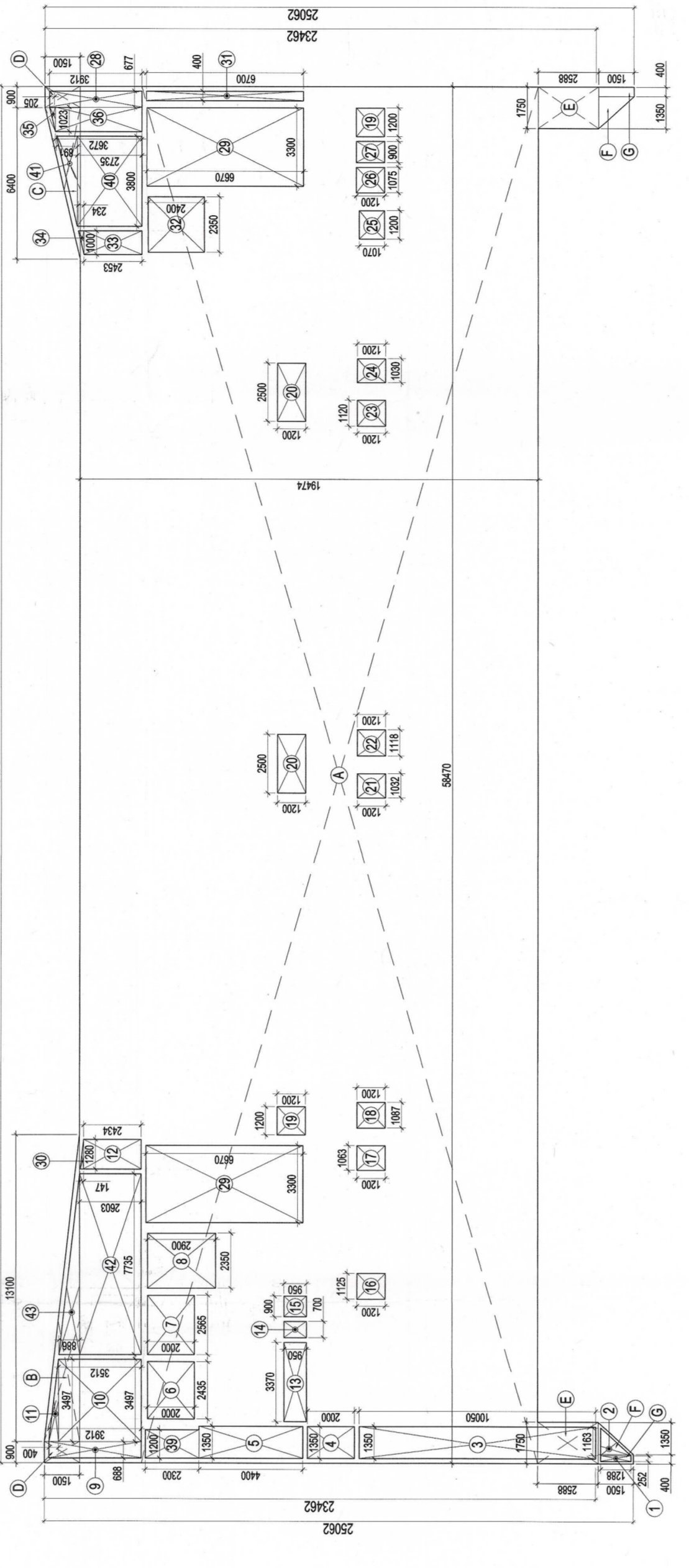
9th (4-38.50m) (REFUGE) FLOOR PLAN



5TH FLOOR PLAN



AREA CALCULATION OF 9th (REFUGE) FLOOR PLAN



AREA CALCULATION OF 5TH FLOOR

LEGEND	LENGTH (m)	WIDTH (m)	Nos.	AREA (sqm)
<b>ADDITIONS</b>				
A	18.750	2.125	12	4.800
B	18.750	2.125	12	4.800
C	6.400	1.500	12	1.152
D	6.400	1.500	12	1.152
E	1.250	1.350	2	0.338
F	0.450	1.350	2	0.122
<b>TOTAL ADDITIONS</b>				
				<b>1316.684</b>
<b>SUBTRACTIONS</b>				
1	0.325	1.350	2	0.885
2	0.325	1.350	2	0.885
3	1.350	16.050	12	26.183
4	1.350	16.050	12	26.183
5	2.700	2.000	1	5.400
6	2.435	2.000	1	4.870
7	2.435	2.000	1	4.870
8	2.435	2.000	1	4.870
9	2.435	2.000	1	4.870
10	0.888	3.812	1	3.385
11	3.487	2.512	1	8.759
12	1.250	2.434	12	36.408
13	3.370	0.850	1	2.865
14	0.850	0.850	1	0.723
15	0.850	0.850	1	0.723
16	1.275	1.500	1	1.913
17	1.275	1.500	1	1.913
18	1.007	1.500	1	1.511
19	1.007	1.500	1	1.511
20	1.007	1.500	1	1.511
21	1.107	1.500	1	1.661
22	1.107	1.500	1	1.661
23	1.107	1.500	1	1.661
24	1.107	1.500	1	1.661
25	1.107	1.500	1	1.661
26	1.107	1.500	1	1.661
27	0.850	1.500	1	1.275
28	0.850	1.500	1	1.275
29	0.850	1.500	1	1.275
30	0.850	1.500	1	1.275
31	0.850	1.500	1	1.275
32	0.850	1.500	1	1.275
33	1.023	0.240	12	2.932
34	1.023	0.240	12	2.932
35	1.023	0.240	12	2.932
36	1.023	0.240	12	2.932
37	1.023	0.240	12	2.932
38	1.023	0.240	12	2.932
39	1.023	0.240	12	2.932
40	1.023	0.240	12	2.932
41	1.023	0.240	12	2.932
42	1.023	0.240	12	2.932
43	1.023	0.240	12	2.932
44	1.023	0.240	12	2.932
45	1.023	0.240	12	2.932
46	1.023	0.240	12	2.932
47	1.023	0.240	12	2.932
48	1.023	0.240	12	2.932
49	1.023	0.240	12	2.932
50	1.023	0.240	12	2.932
<b>TOTAL SUBTRACTION</b>				<b>312.000</b>
<b>TOTAL AREA OF 9TH (REFUGE) FLOOR</b>				<b>1009.247</b>

LEGEND	LENGTH (m)	WIDTH (m)	Nos.	AREA (sqm)
<b>ADDITIONS</b>				
A	18.750	2.125	12	4.800
B	18.750	2.125	12	4.800
C	6.400	1.500	12	1.152
D	6.400	1.500	12	1.152
E	1.250	1.350	2	0.338
F	0.450	1.350	2	0.122
G	0.888	3.812	1	3.385
H	3.487	2.512	1	8.759
I	1.250	2.434	12	36.408
J	3.370	0.850	1	2.865
K	0.850	0.850	1	0.723
L	0.850	0.850	1	0.723
M	1.275	1.500	1	1.913
N	1.275	1.500	1	1.913
O	1.007	1.500	1	1.511
P	1.007	1.500	1	1.511
Q	1.007	1.500	1	1.511
R	1.007	1.500	1	1.511
S	1.007	1.500	1	1.511
T	1.007	1.500	1	1.511
U	1.007	1.500	1	1.511
V	1.007	1.500	1	1.511
W	1.007	1.500	1	1.511
X	1.007	1.500	1	1.511
Y	1.007	1.500	1	1.511
Z	1.007	1.500	1	1.511
AA	1.007	1.500	1	1.511
AB	1.007	1.500	1	1.511
AC	1.007	1.500	1	1.511
AD	1.007	1.500	1	1.511
AE	1.007	1.500	1	1.511
AF	1.007	1.500	1	1.511
AG	1.007	1.500	1	1.511
AH	1.007	1.500	1	1.511
AI	1.007	1.500	1	1.511
AJ	1.007	1.500	1	1.511
AK	1.007	1.500	1	1.511
AL	1.007	1.500	1	1.511
AM	1.007	1.500	1	1.511
AN	1.007	1.500	1	1.511
AO	1.007	1.500	1	1.511
AP	1.007	1.500	1	1.511
AQ	1.007	1.500	1	1.511
AR	1.007	1.500	1	1.511
AS	1.007	1.500	1	1.511
AT	1.007	1.500	1	1.511
AU	1.007	1.500	1	1.511
AV	1.007	1.500	1	1.511
AW	1.007	1.500	1	1.511
AX	1.007	1.500	1	1.511
AY	1.007	1.500	1	1.511
AZ	1.007	1.500	1	1.511
BA	1.007	1.500	1	1.511
BB	1.007	1.500	1	1.511
BC	1.007	1.500	1	1.511
BD	1.007	1.500	1	1.511
BE	1.007	1.500	1	1.511
BF	1.007	1.500	1	1.511
BG	1.007	1.500	1	1.511
BH	1.007	1.500	1	1.511
BI	1.007	1.500	1	1.511
BJ	1.007	1.500	1	1.511
BK	1.007	1.500	1	1.511
BL	1.007	1.500	1	1.511
BM	1.007	1.500	1	1.511
BN	1.007	1.500	1	1.511
BO	1.007	1.500	1	1.511
BP	1.007	1.500	1	1.511
BQ	1.007	1.500	1	1.511
BR	1.007	1.500	1	1.511
BS	1.007	1.500	1	1.511
BT	1.007	1.500	1	1.511
BU	1.007	1.500	1	1.511
BV	1.007	1.500	1	1.511
BW	1.007	1.500	1	1.511
BX	1.007	1.500	1	1.511
BY	1.007	1.500	1	1.511
BZ	1.007	1.500	1	1.511
CA	1.007	1.500	1	1.511
CB	1.007	1.500	1	1.511
CC	1.007	1.500	1	1.511
CD	1.007	1.500	1	1.511
CE	1.007	1.500	1	1.511
CF	1.007	1.500	1	1.511
CG	1.007	1.500	1	1.511
CH	1.007	1.500	1	1.511
CI	1.007	1.500	1	1.511
CJ	1.007	1.500	1	1.511
CK	1.007	1.500	1	1.511
CL	1.007	1.500	1	1.511
CM	1.007	1.500	1	1.511
CN	1.007	1.500	1	1.511
CO	1.007	1.500	1</	